



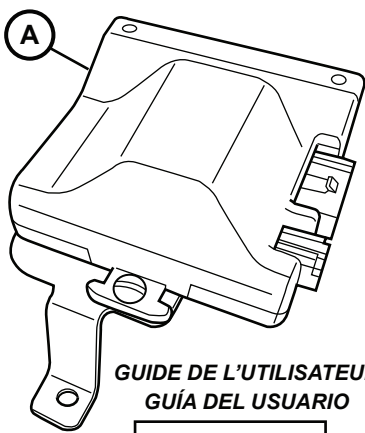
TRAILER BRAKE

FREIN DE REMORQUE

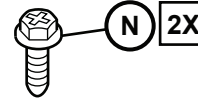
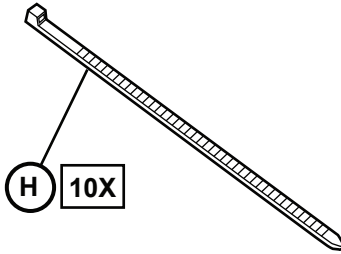
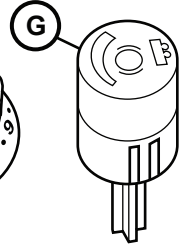
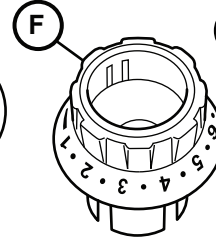
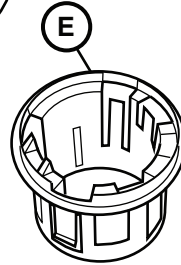
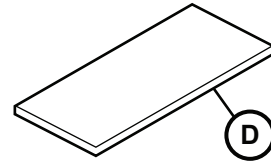
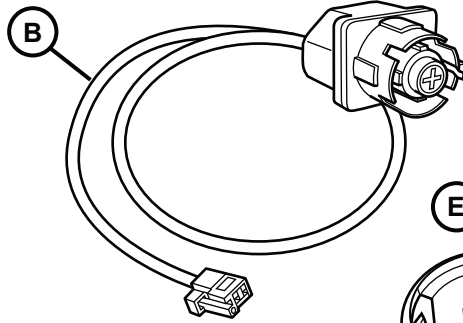
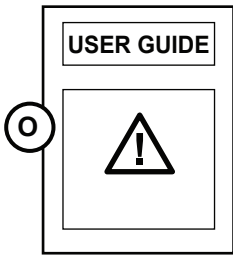
FRENO DE REMOLQUE

JEEP GRAND CHEROKEE

www.mopar.com



GUIDE DE L'UTILISATEUR
GUÍA DEL USUARIO

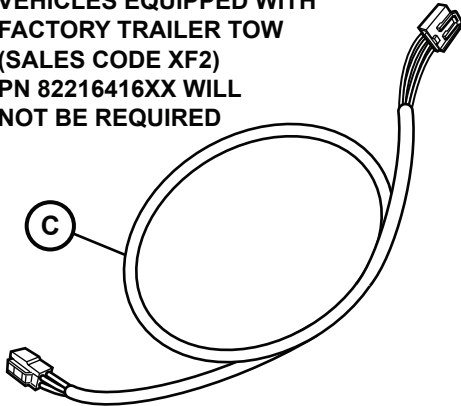


(M) AND (N) REQUIRED ONLY
FOR VEHICLES WITHOUT
NIGHT VISION OPTION

HARNESS (C) REQUIRED FOR
VEHICLES EQUIPPED WITH
FACTORY TRAILER TOW
(SALES CODE XF2)
PN 82216416XX WILL
NOT BE REQUIRED

(M) ET (N) SEULEMENT REQUIS
SUR LES VÉHICULES SANS
L'OPTION DE VISION DE NUIT

(M) Y (N) SOLO SE REQUIEREN
EN VEHÍCULOS SIN OPCIÓN
DE VISIÓN NOCTURNA

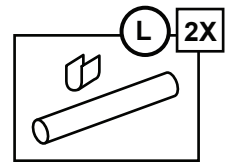


REQUIRED FOR VEHICLES NOT
EQUIPPED WITH FACTORY TRAILER TOW.
HARNESS (C) WILL NOT BE REQUIRED

ORDER: PN 82216416XX
COMMANDEZ : N/P 82216416XX
PEDIDO: NP 82216416XX

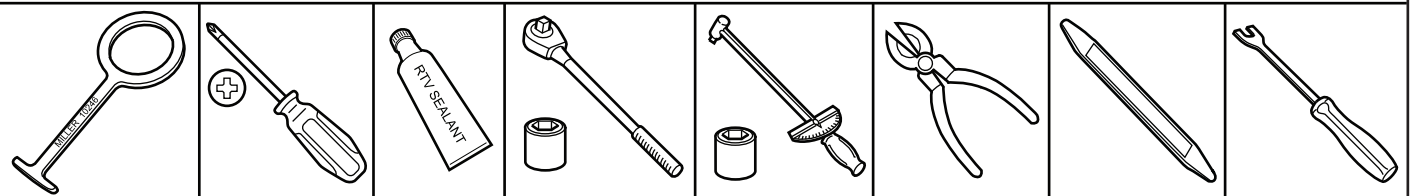
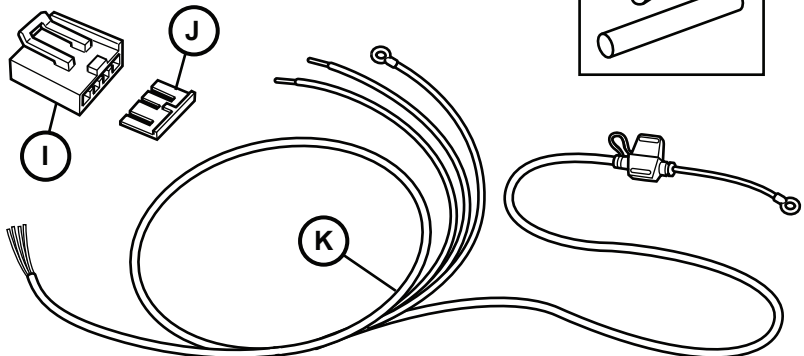
REQUIS SUR LES VÉHICULES NON MUNIS
DE L'OPTION DE REMORQUAGE D'ORIGINE

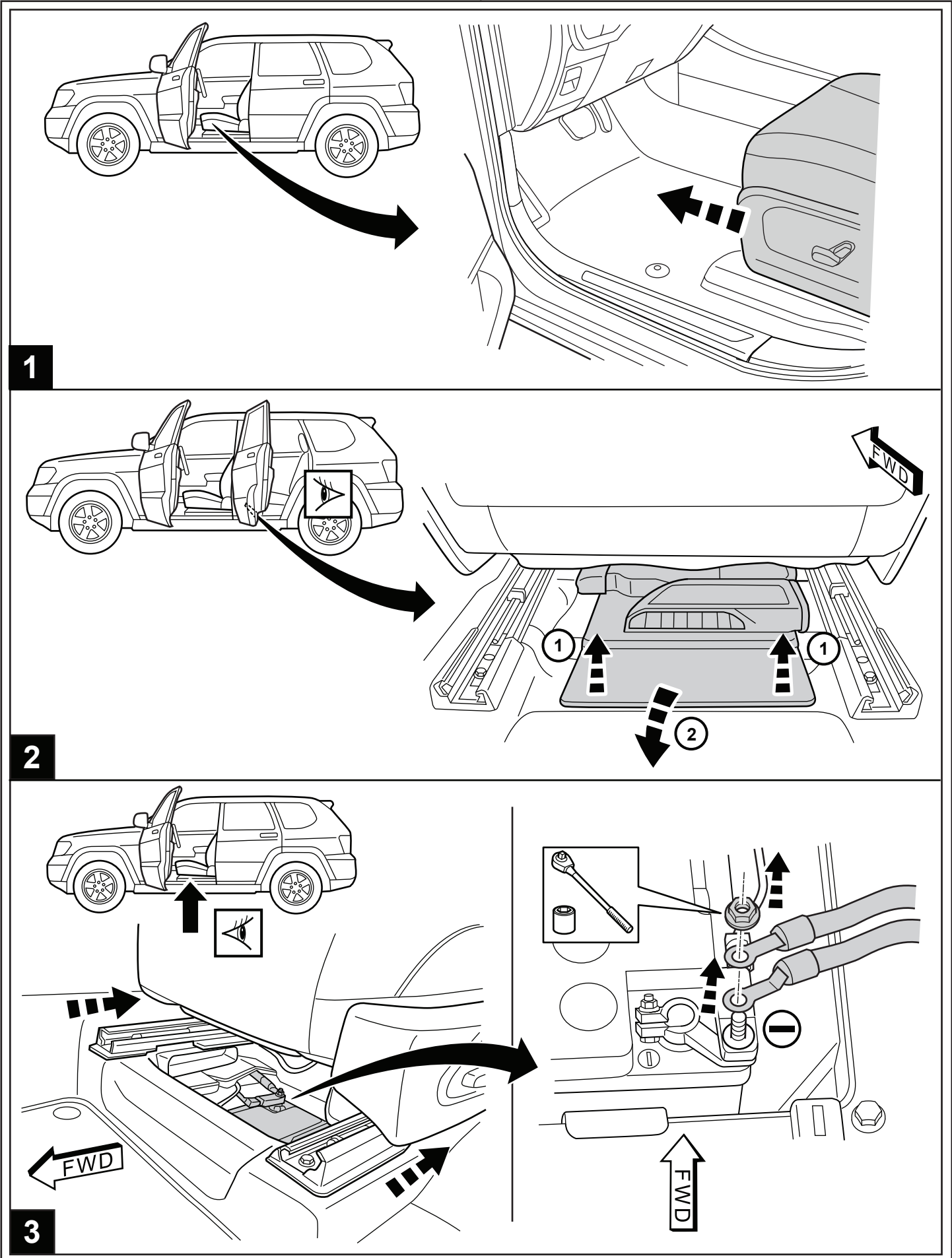
SE REQUIERE PARA VEHÍCULOS NO EQUIPADOS
CON REMOLQUE DE FÁBRICA.

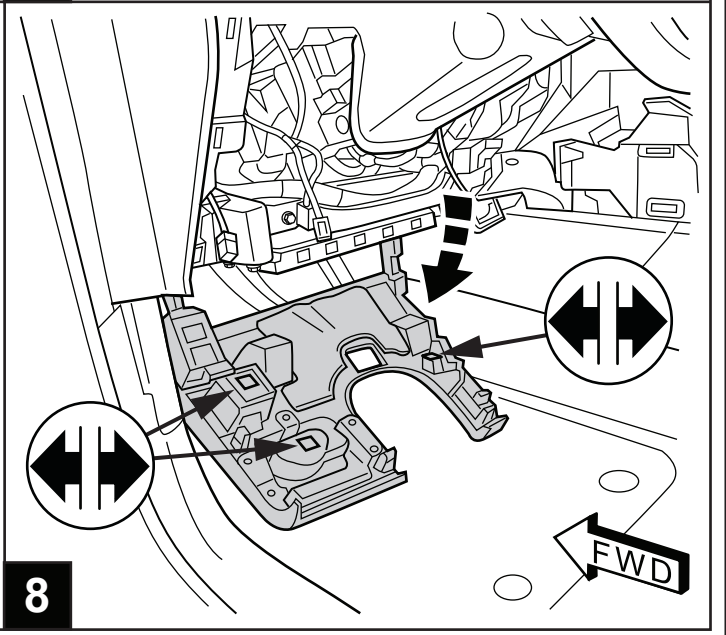
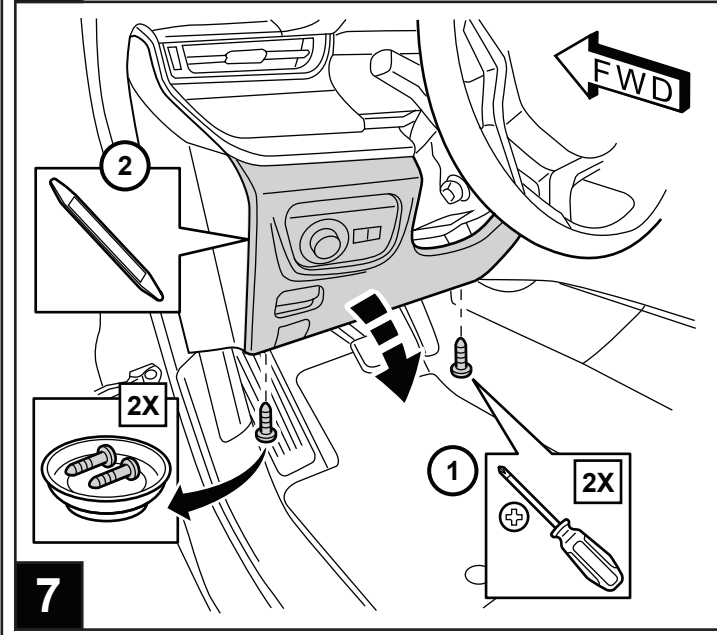
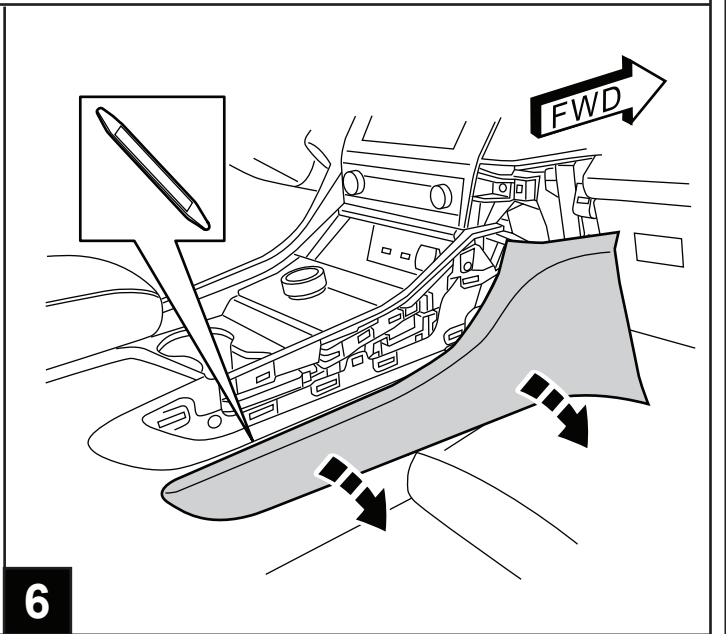
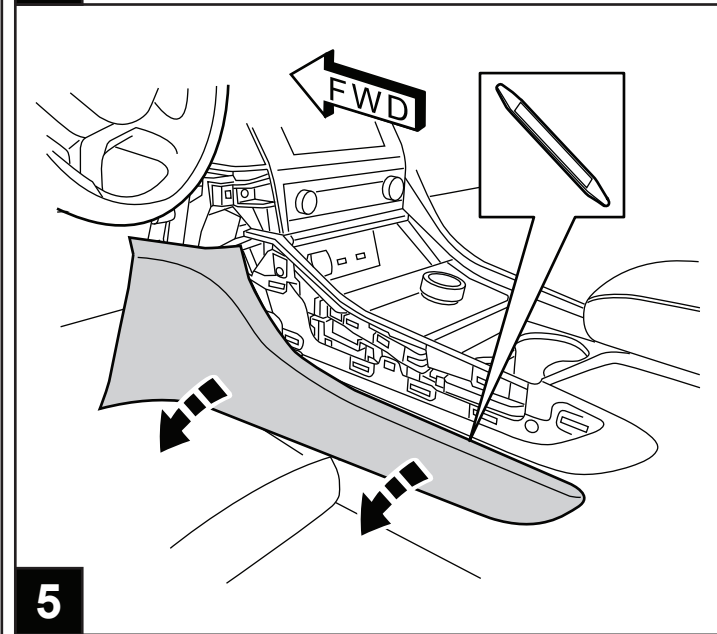
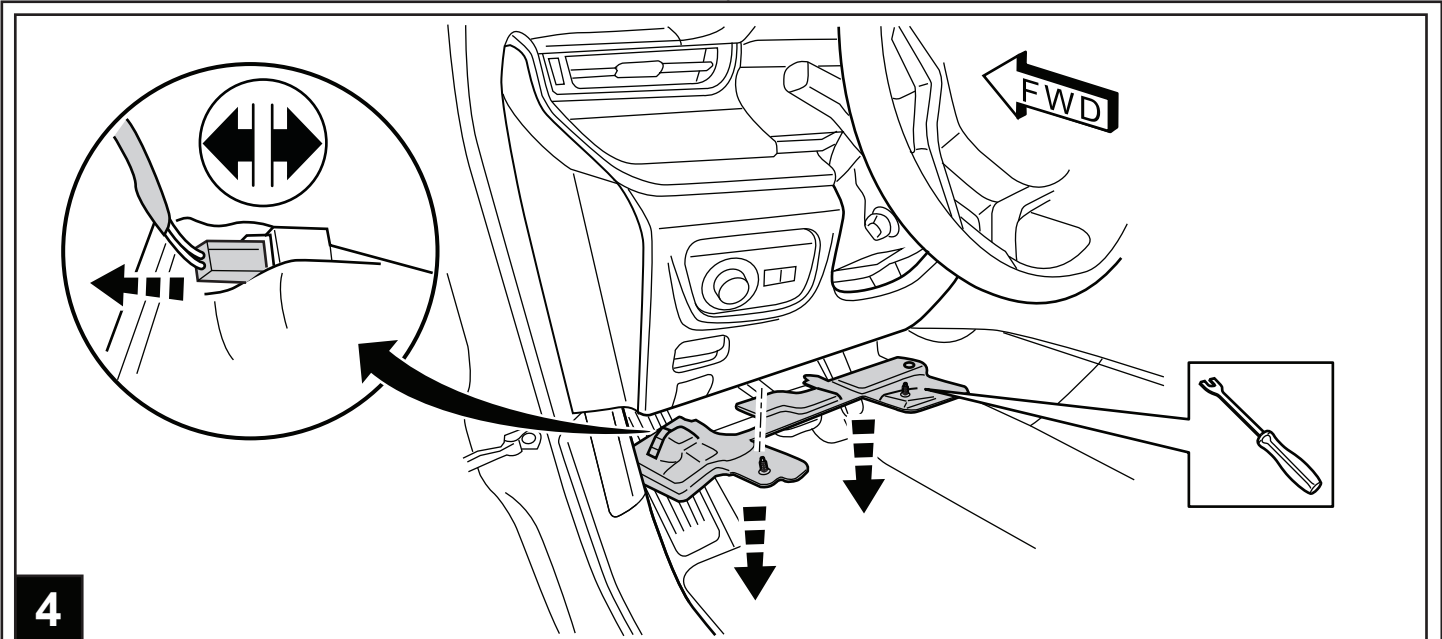


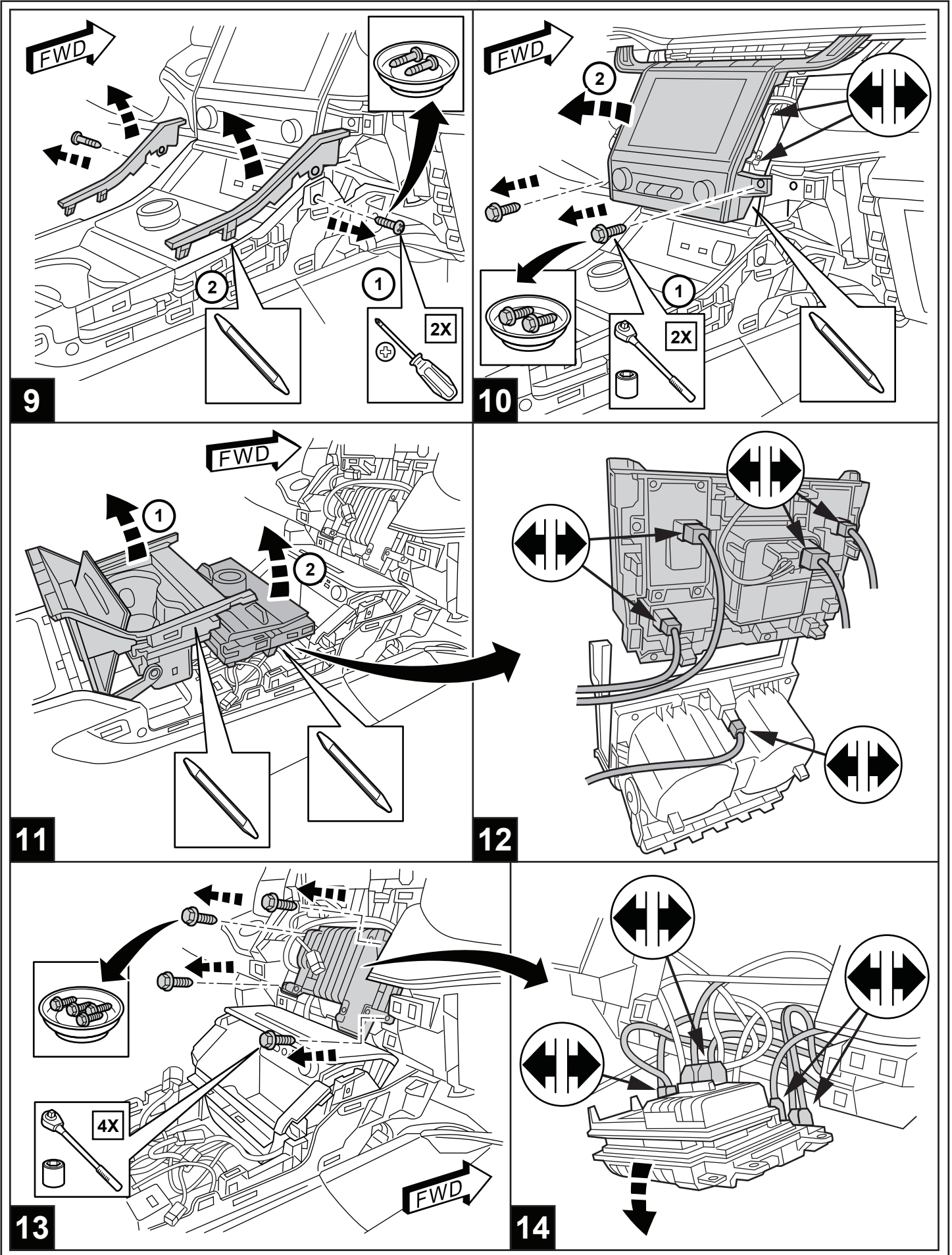
LE FAISCEAU DE CÂBLES (C) EST REQUIS SUR
LES VÉHICULES MUNIS DE L'OPTION DE
REMORQUAGE D'ORIGINE (CODE DE VENTE XF2)
LE N/P 82216416XX NE SERA PAS REQUIS

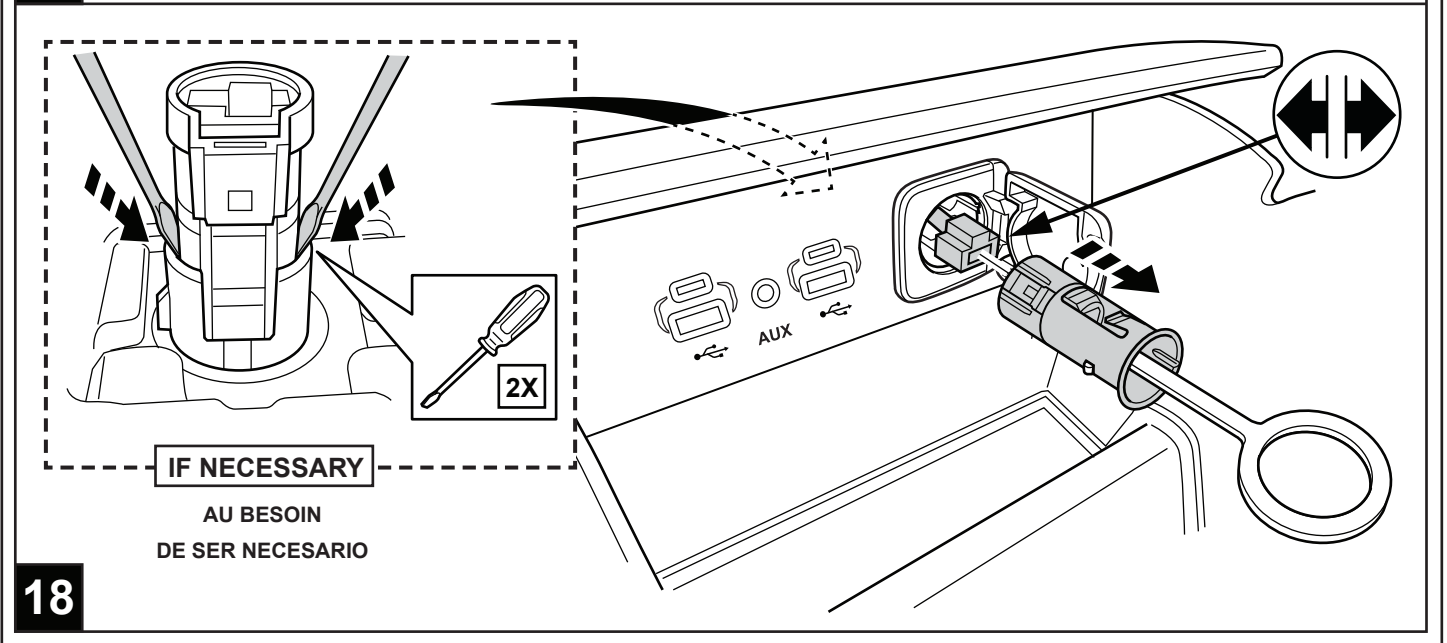
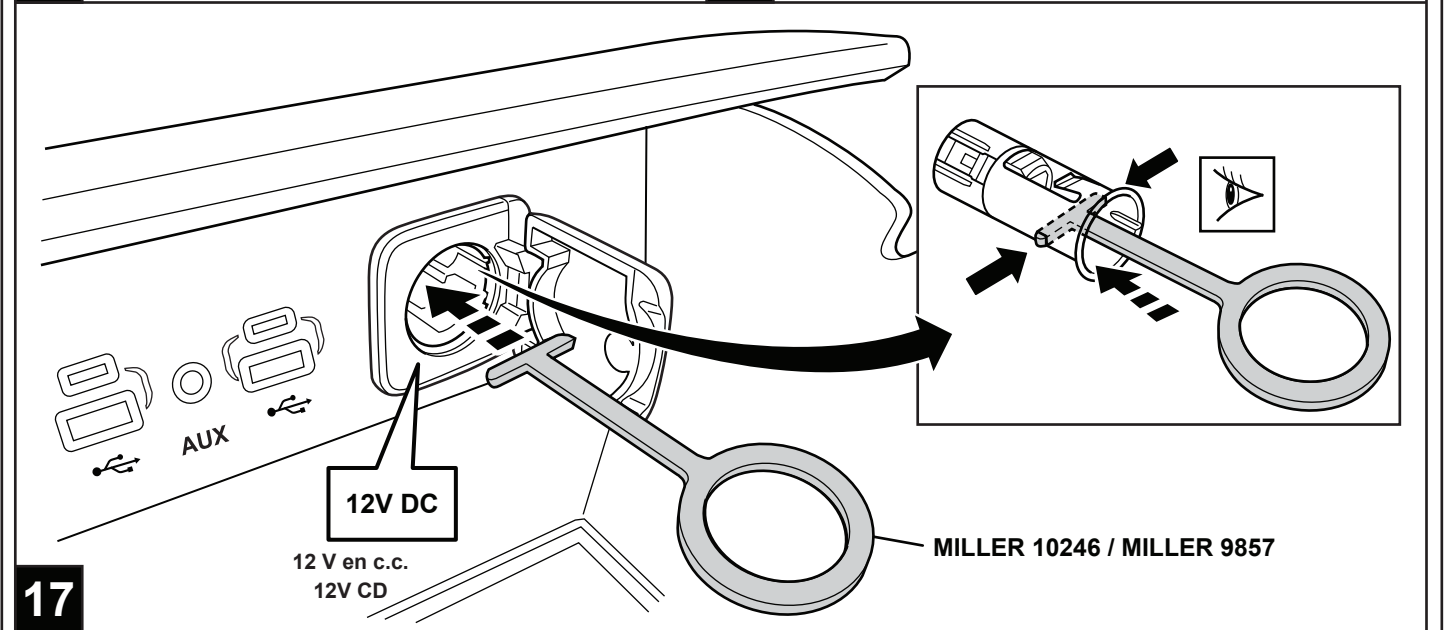
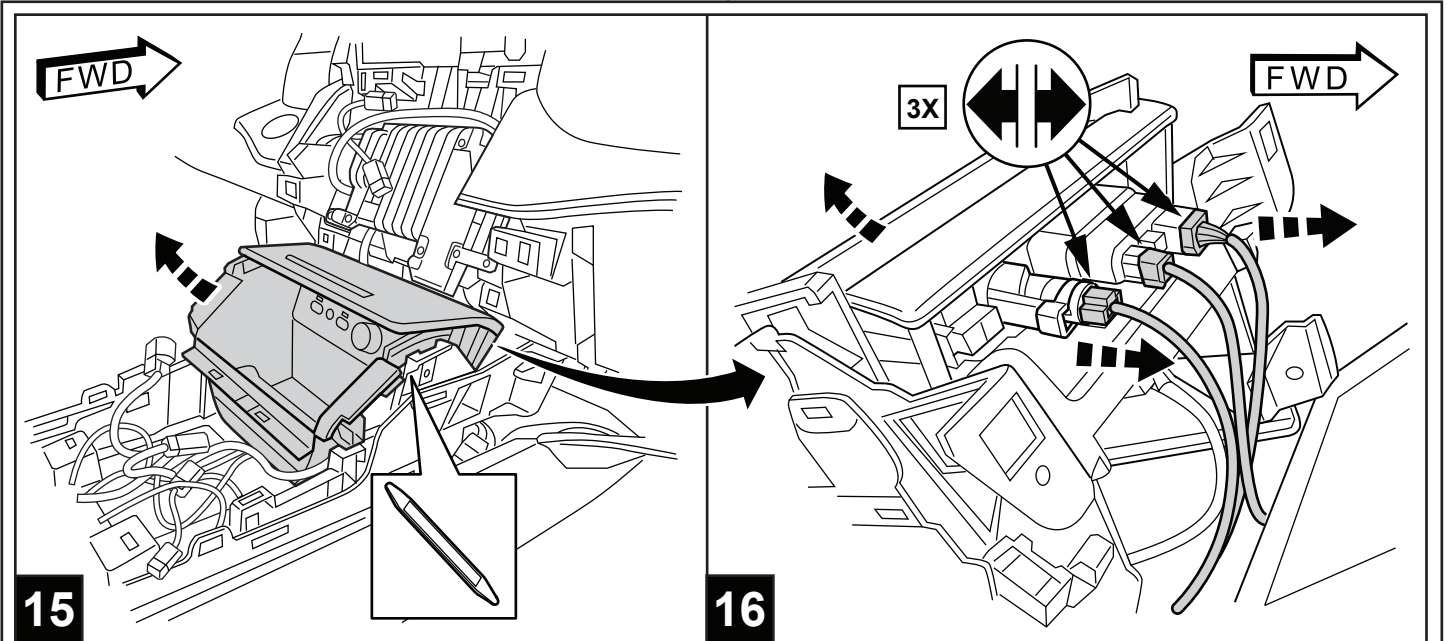
SE REQUIERE EL ARNÉS (C) EN VEHÍCULOS
EQUIPADOS CON REMOLQUE
(CÓDIGO DE VENTAS XF2)
NO SE REQUIERE EL NP 82216416XX

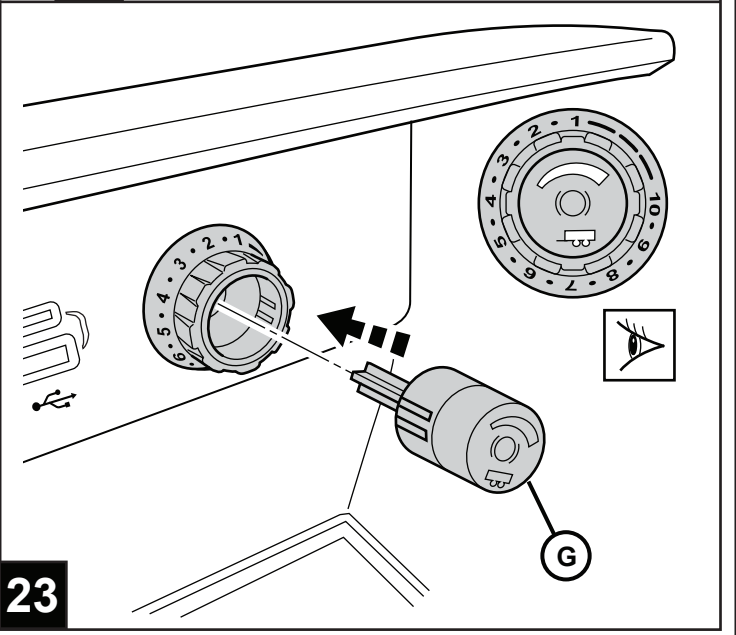
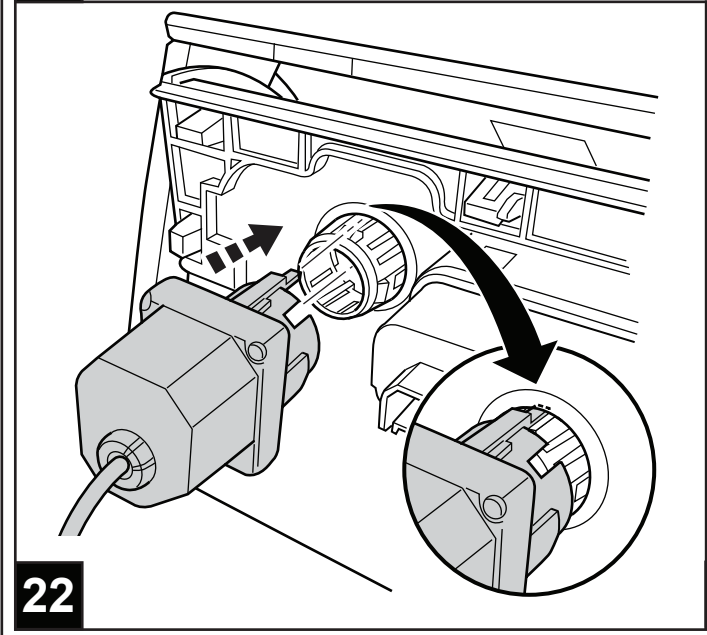
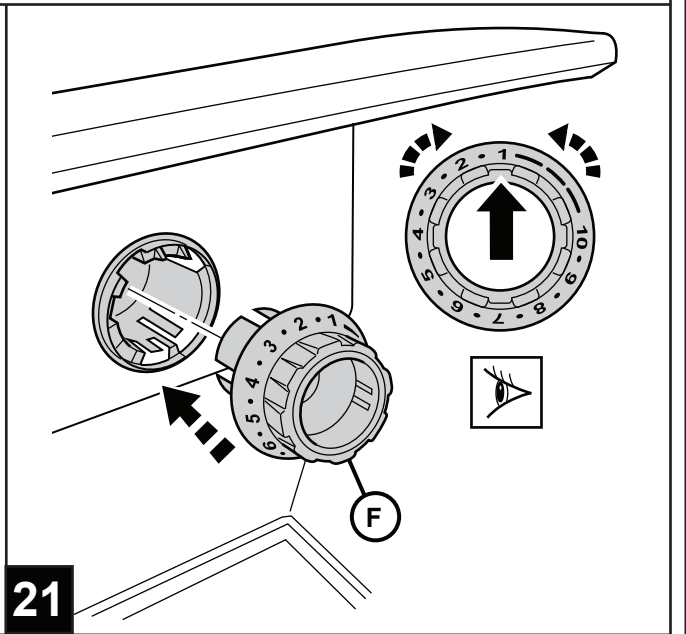
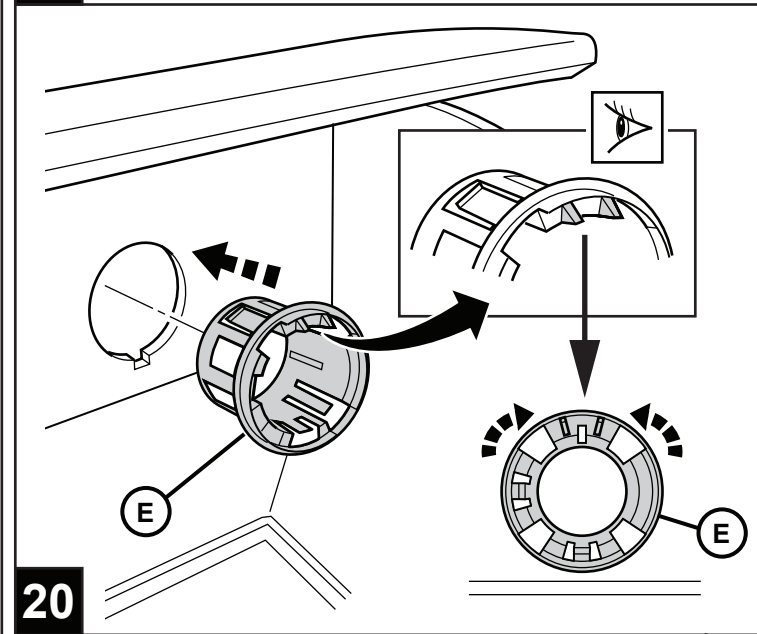
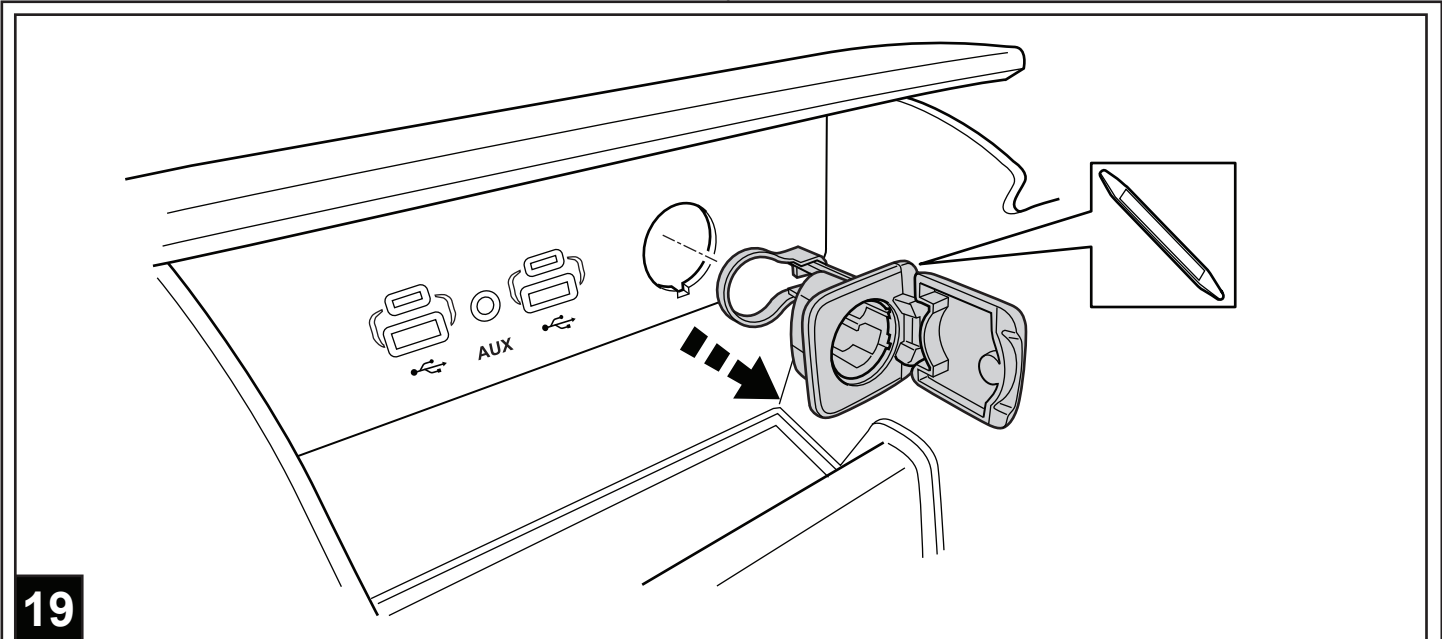












24

NOTE: NOT REQUIRED IF EQUIPPED WITH NIGHT VISION

RE-USE EXISTING FASTENERS IF PRESENT

25

REMARQUE :
NON REQUIS
AVEC L'OPTION
DE VISION DE NUIT
RÉUTILISEZ LES ATTACHES
EXISTANTES (SI PRÉSENTES)

NOTA: NO SE REQUIERE
SI ESTÁ EQUIPADO CON
VISION NOCTURNA
REUTILICE LOS SUJETADORES
EXISTENTES SI LOS HAY

26

NOTE: NOT REQUIRED IF EQUIPPED WITH NIGHT VISION

RE-USE EXISTING FASTENERS IF PRESENT

27

REMARQUE : NON REQUIS
AVEC L'OPTION DE
VISION DE NUIT
RÉUTILISEZ LES ATTACHES
EXISTANTES (SI PRÉSENTES)

NOTA: NO SE REQUIERE
SI ESTÁ EQUIPADO CON
VISION NOCTURNA
REUTILICE LOS
SUJETADORES
EXISTENTES SI LOS HAY

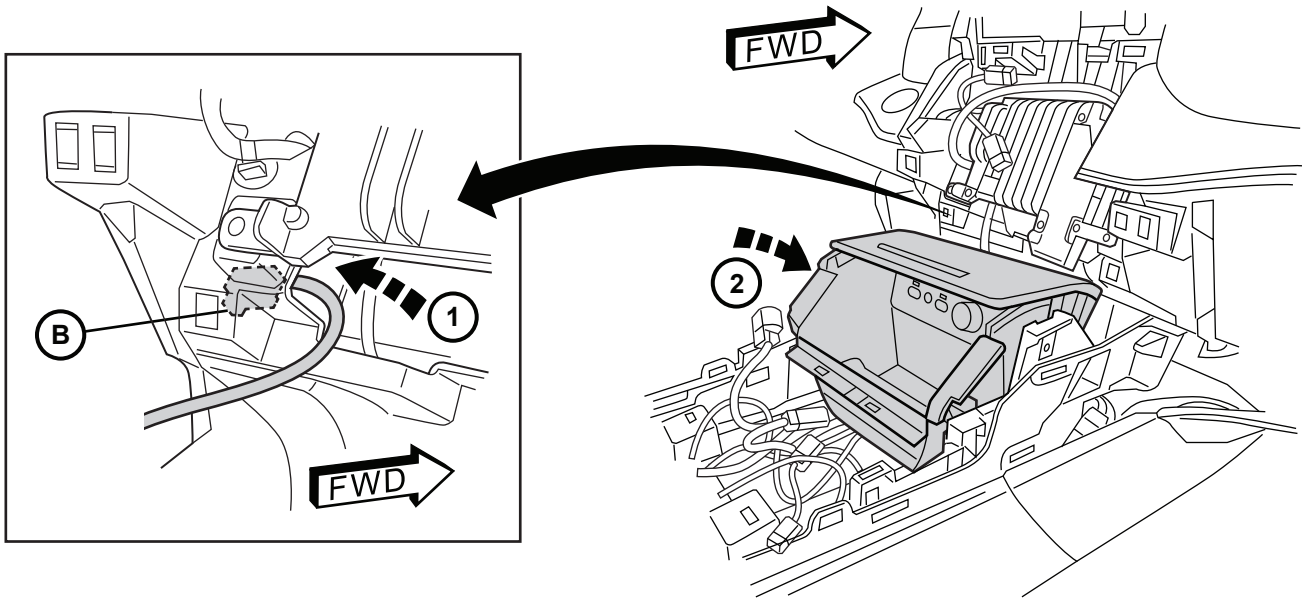
28

NOTE: RE-USE VEHICLE FASTENERS IF EQUIPPED WITH NIGHT VISION

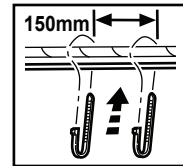
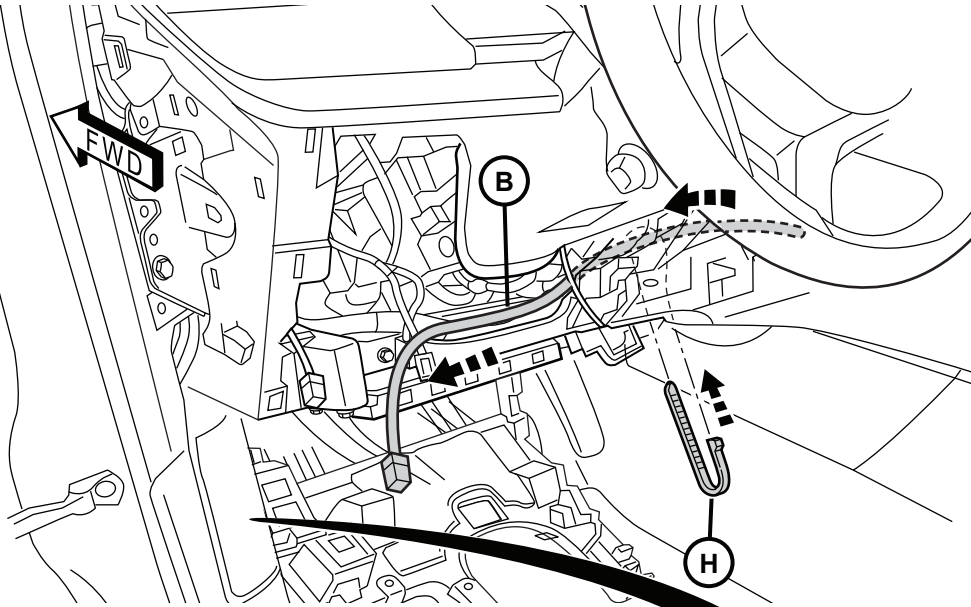
29

REMARQUE : SI LE VÉHICULE
EST ÉQUIPÉ DE L'OPTION
DE VISION DE NUIT,
RÉUTILISEZ LES
ATTACHES PRÉSENTES
SUR LE VÉHICULE

NOTA: REUTILICE
LOS SUJETADORES
DEL VEHÍCULO SI
ESTÁ EQUIPADO CON
VISION NOCTURNA



29

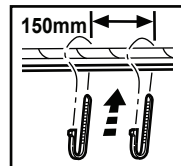
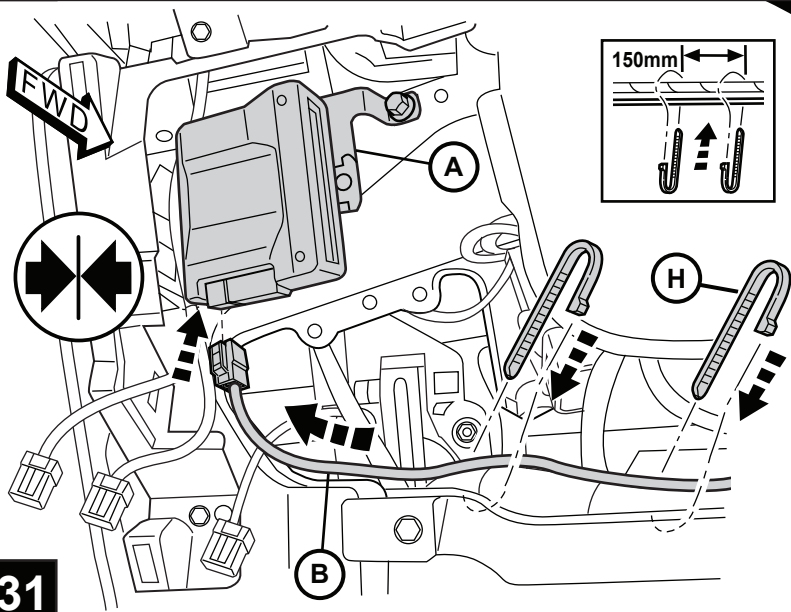


**SECURE HARNESS (B)
EVERY 150mm
BE SURE TO AVOID
SHARP EDGES AND
MOVING PARTS**

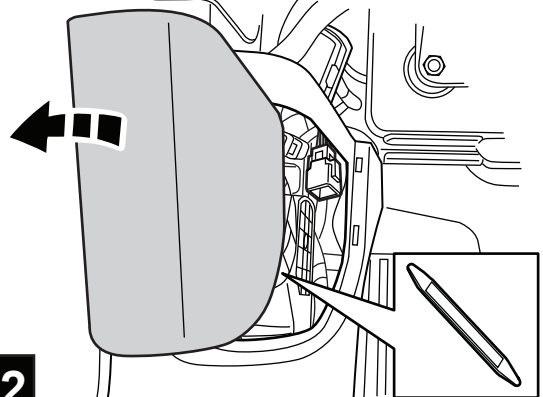
FIXEZ LE FAISCEAU DE
CÂBLES (B) À CHAQUE 150 mm
PRENEZ SOIN D'ÉVITER
LES ARÊTES TRANCHANTES
ET LES PIÈCES MOBILES

ASEGURE EL ARNÉS (B)
CADA 150 mm
ASEGÚRESE DE EVITAR LOS
BORDES FILOSOS Y PARTES
MOVIBLES

30

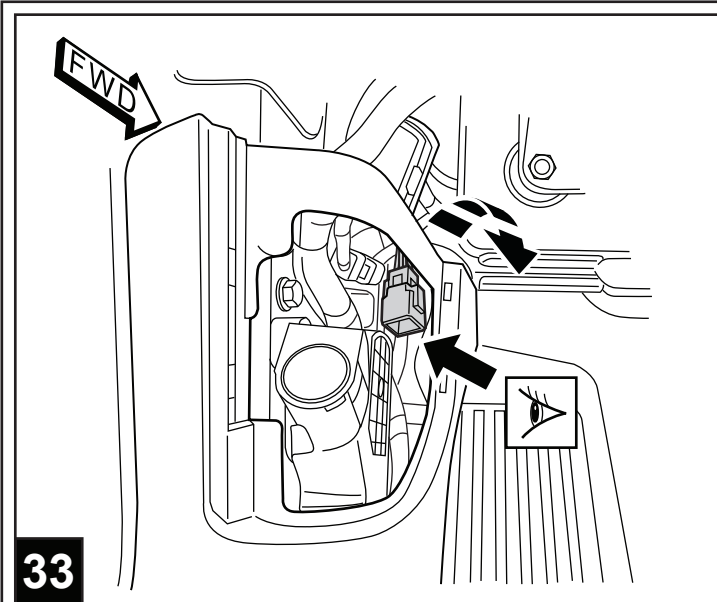


**IF VEHICLE IS EQUIPPED WITH
FACTORY TRAILER TOW**
SI LE VÉHICULE EST ÉQUIPÉ DE L'OPTION
DE REMORQUAGE D'ORIGINE
SI EL VEHÍCULO ESTÁ EQUIPADO
CON REMOLQUE DE FÁBRICA

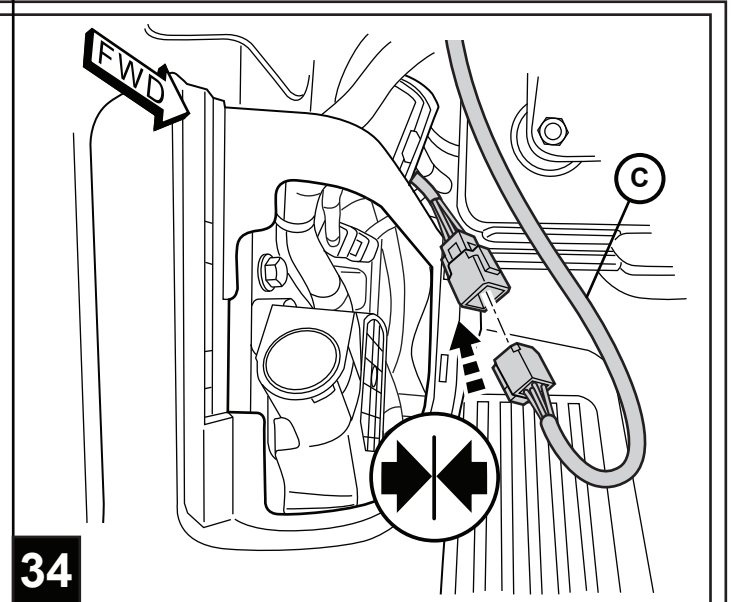


31

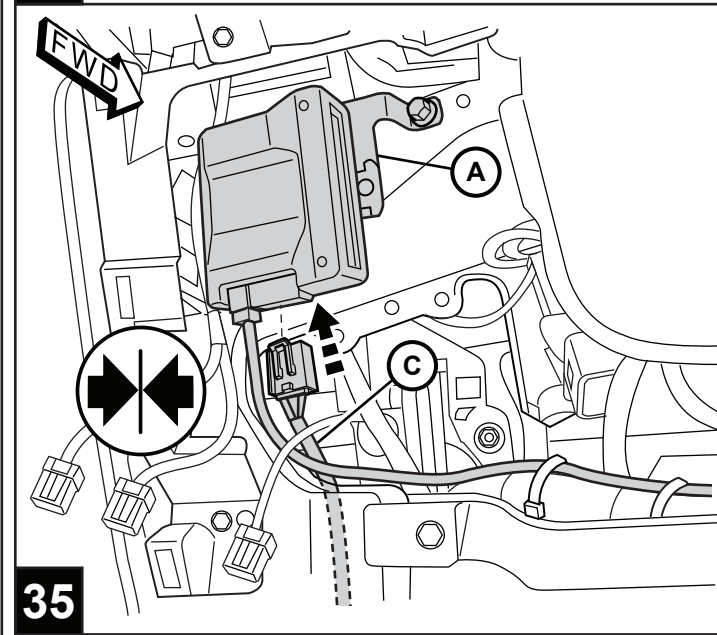
32



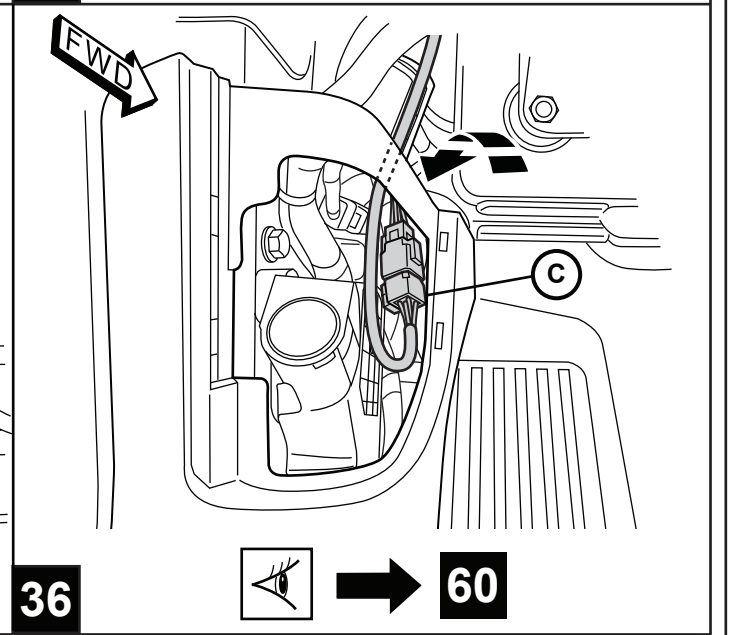
33



34



35



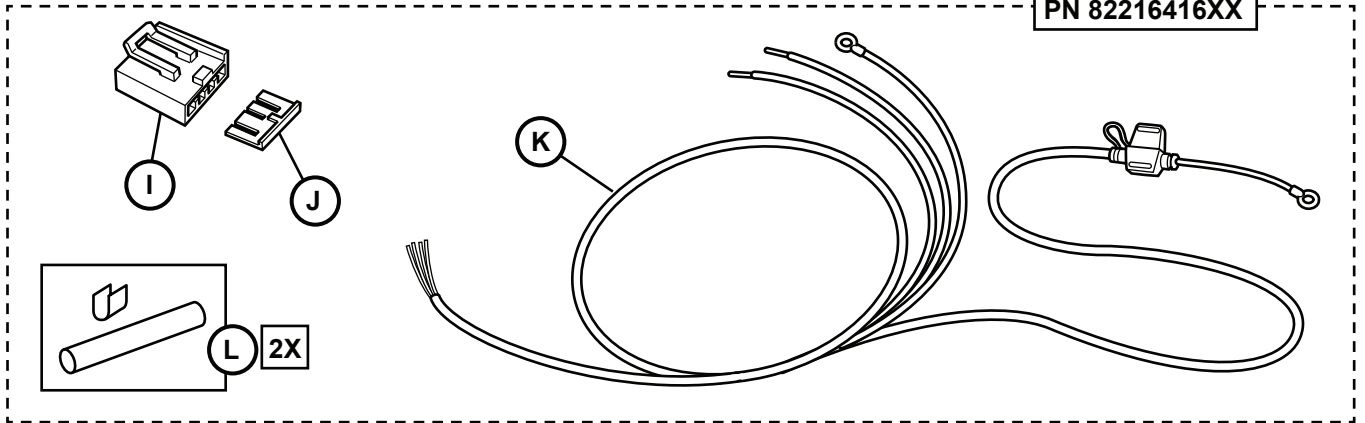
36

60

IF VEHICLE IS NOT EQUIPPED WITH FACTORY TRAILER TOW
SI LE VÉHICULE N'EST PAS ÉQUIPÉ DE L'OPTION DE REMORQUAGE D'ORIGINE
SI EL VEHÍCULO NO ESTÁ EQUIPADO CON REMOLQUE DE FÁBRICA

N/P 82216416XX
 NP 82216416XX

PN 82216416XX



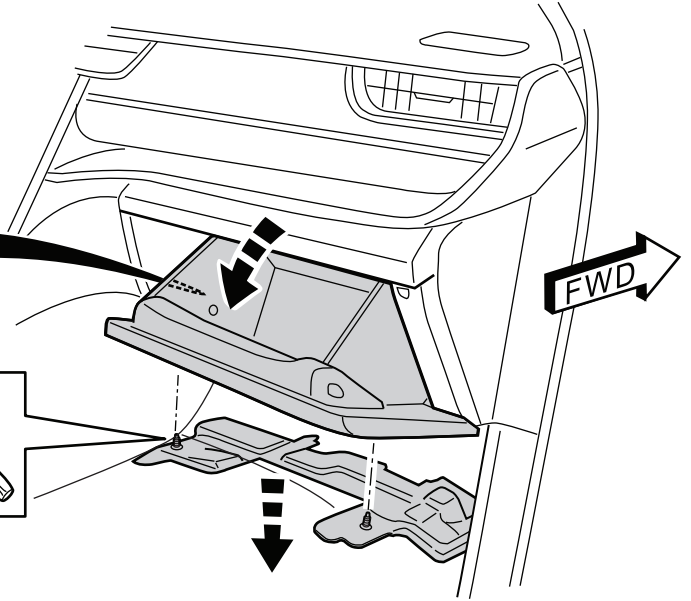
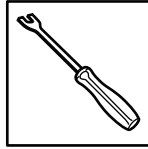
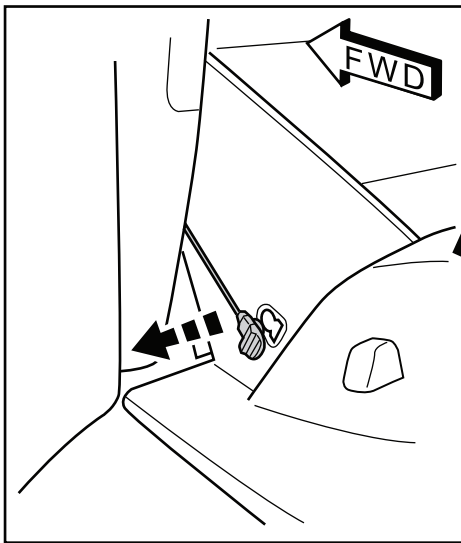
37



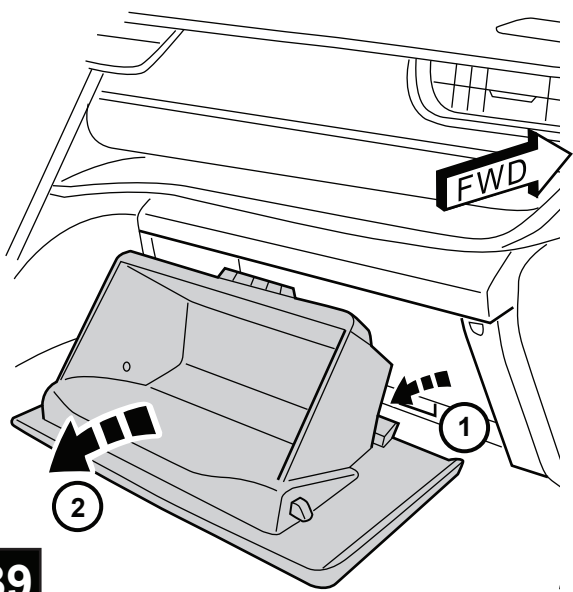
38



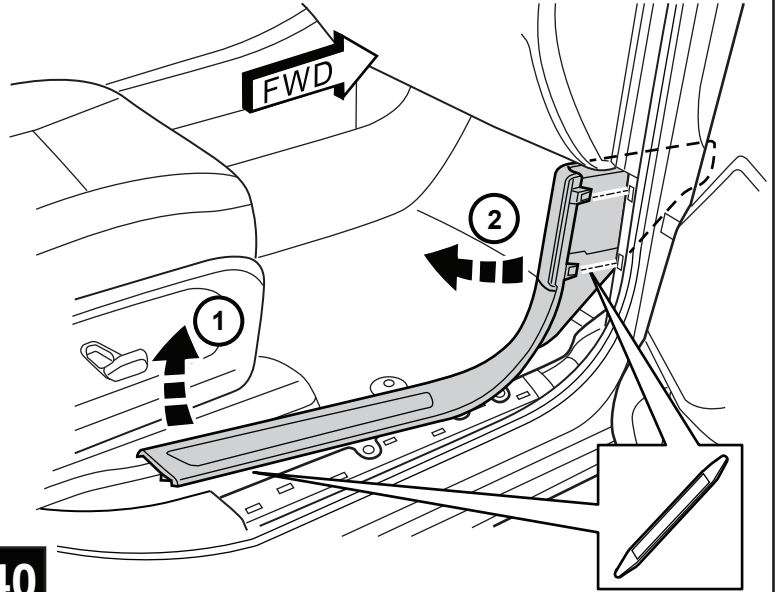
59



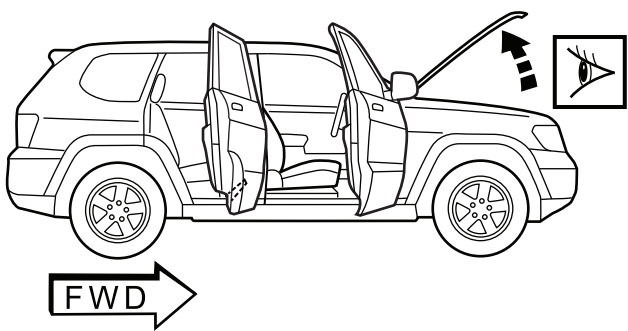
38



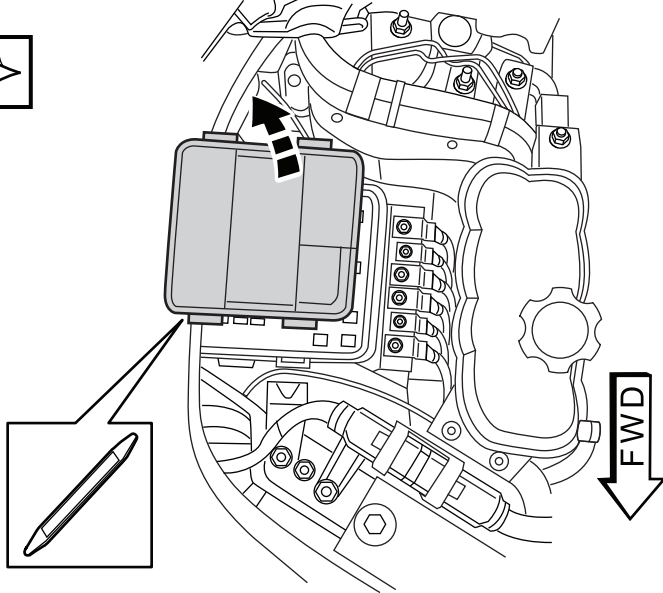
39

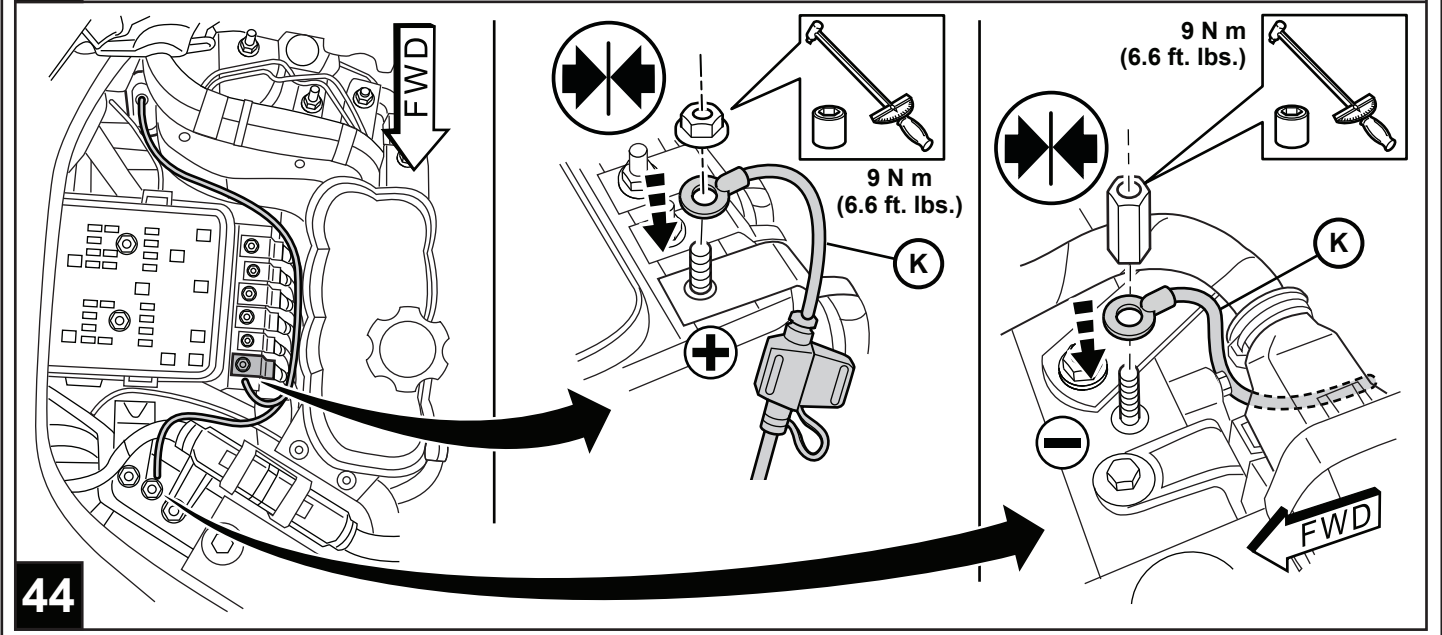
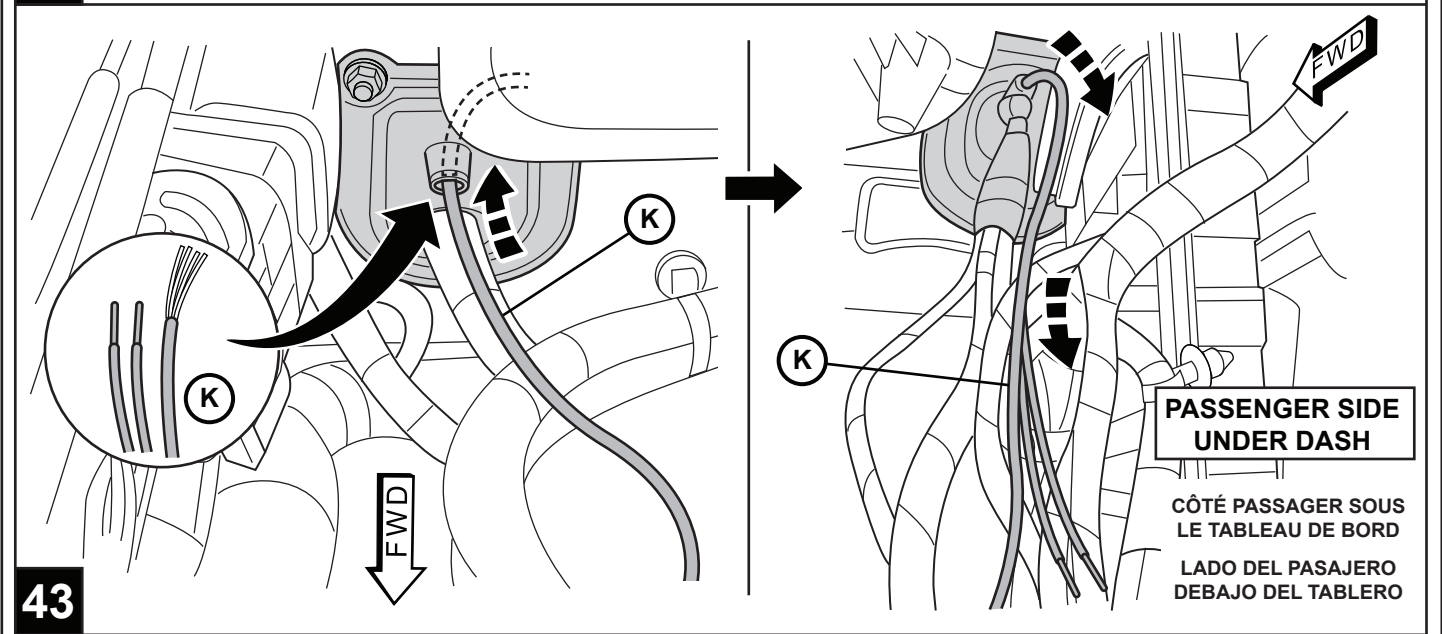
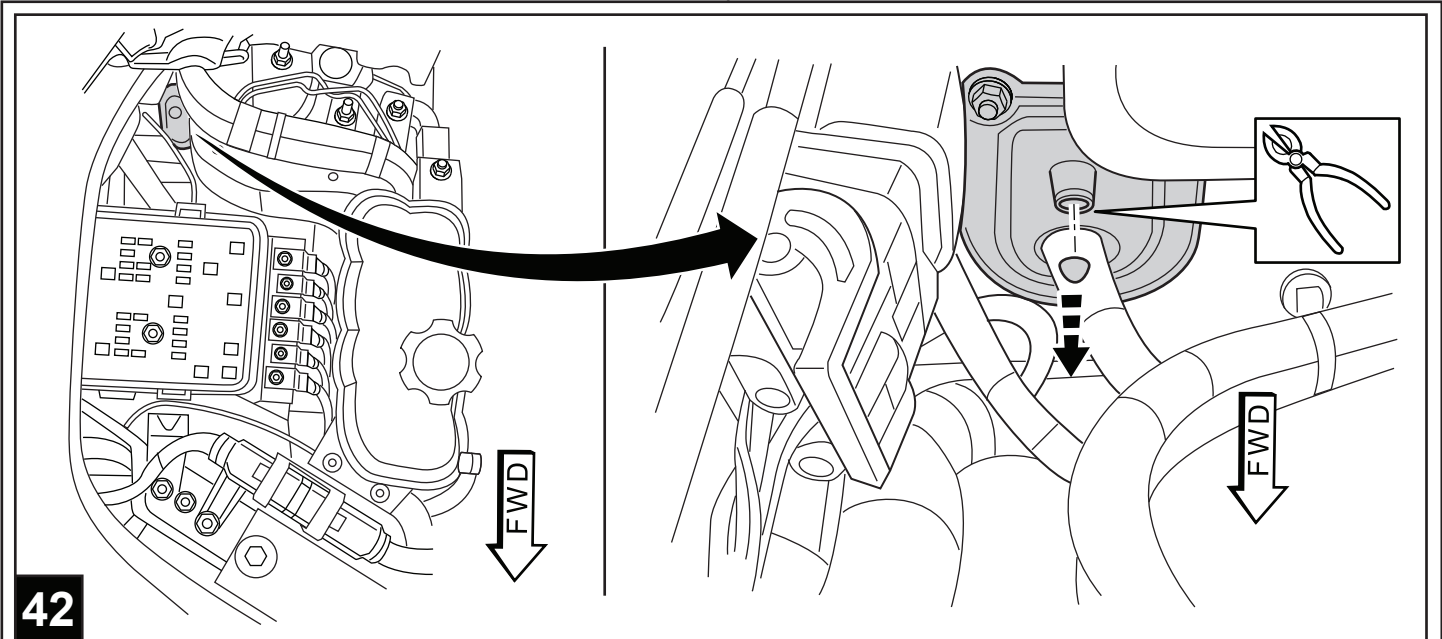


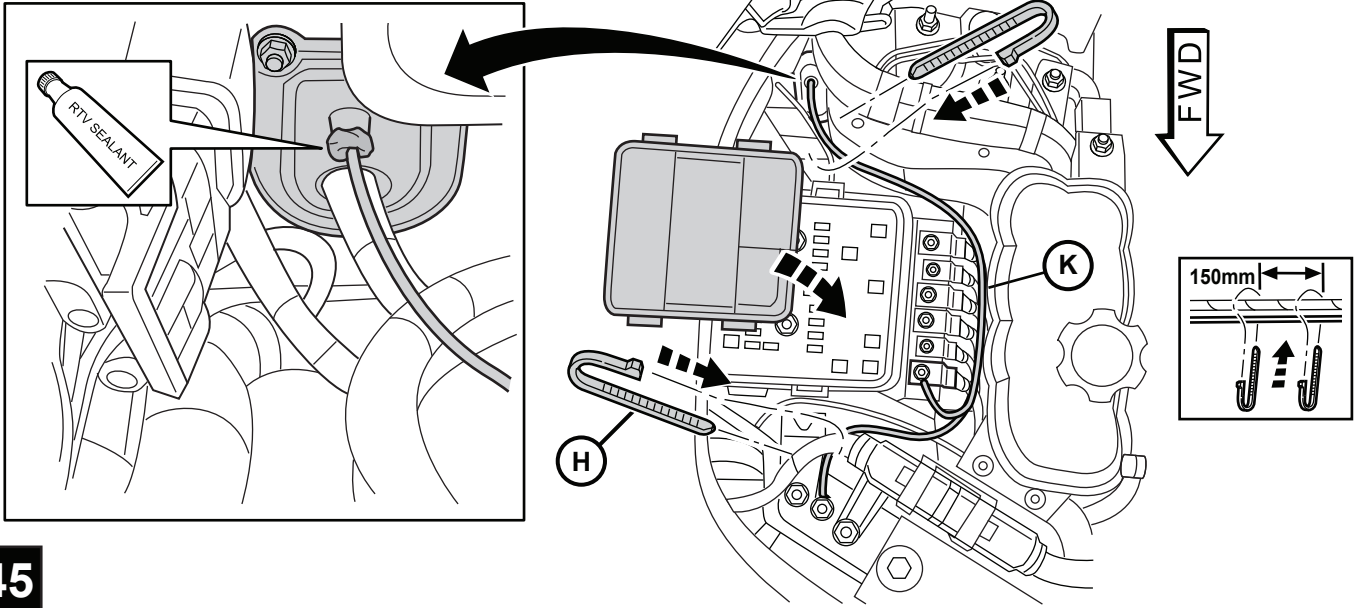
40



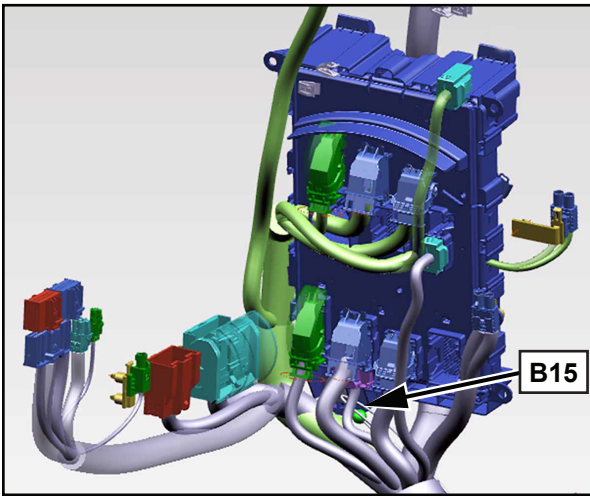
41







45



B15

DK/WT vehicle circuit B15.
See above for location

Véhicule DK/WT circuit B15.
Pour l'emplacement,
voir ci-dessus.

DK/WT circuito B15 del vehículo.
Ver la ubicación arriba

Aftermarket brake out to trailer
connector. Splice to blue wire on
Mopar trailer tow kit 82216041XX

Freins de rechange vers connecteur de
remorque. Raccordez au fil bleu sur la
trousse pour remorque Mopar 82216041XX

Freno no original fuera del conector
del remolque. Empalmar con el cable azul
del paquete de remolque Mopar 82216041XX

DG/WH

FWD

BL

WT

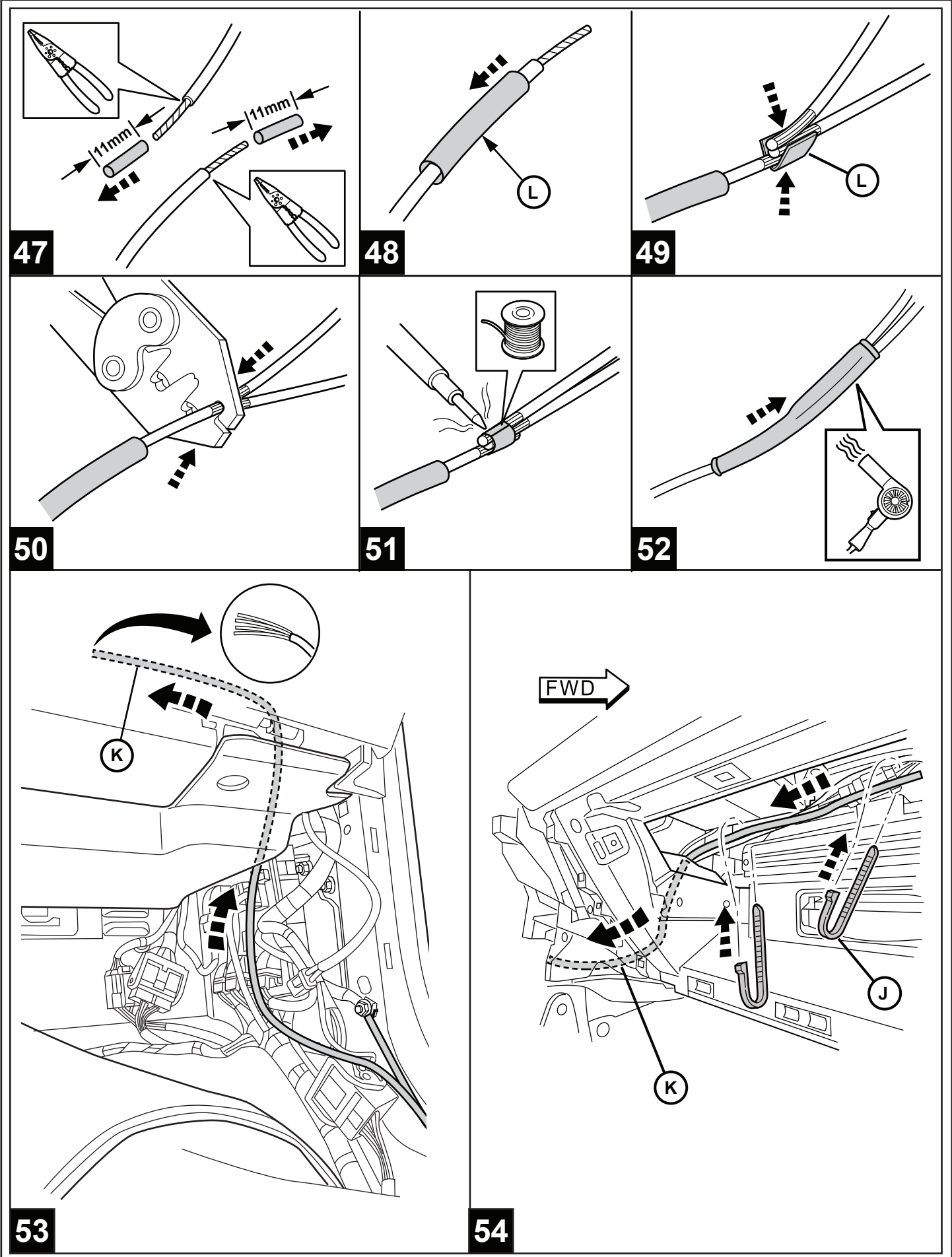


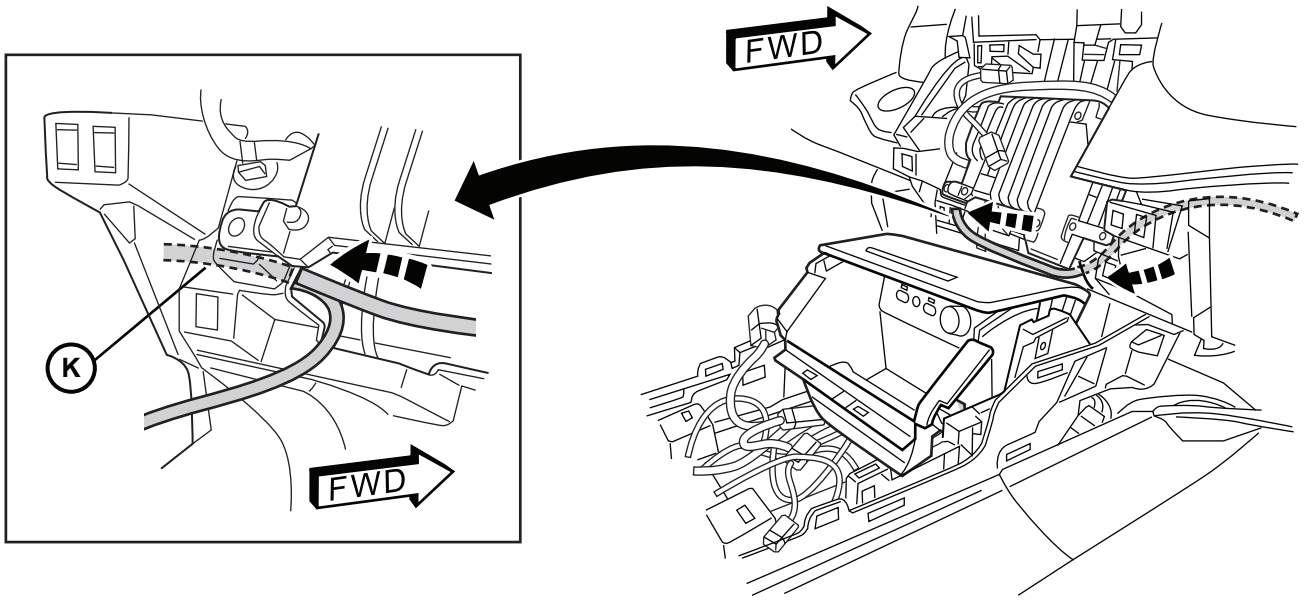
47



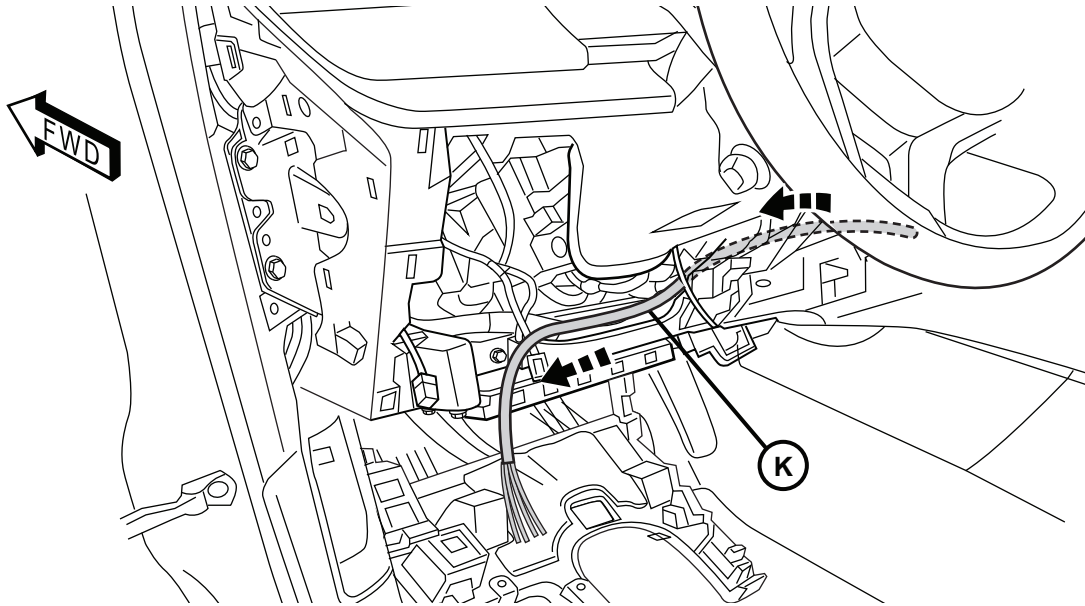
52

46

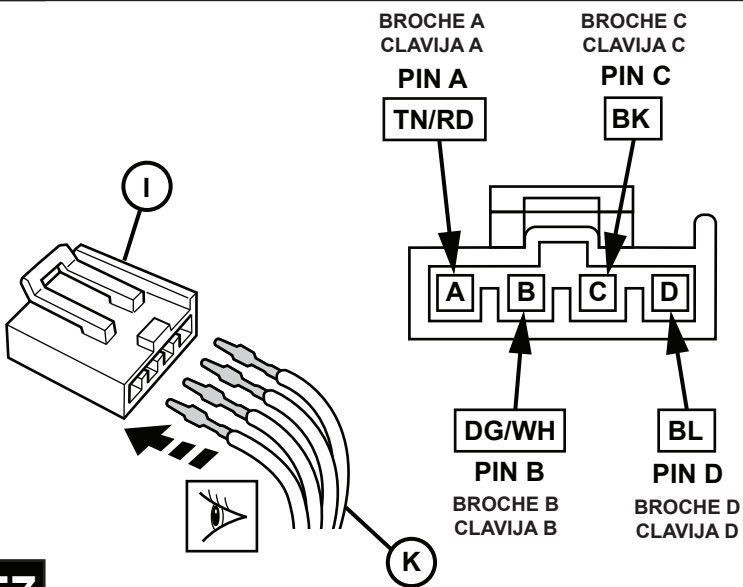




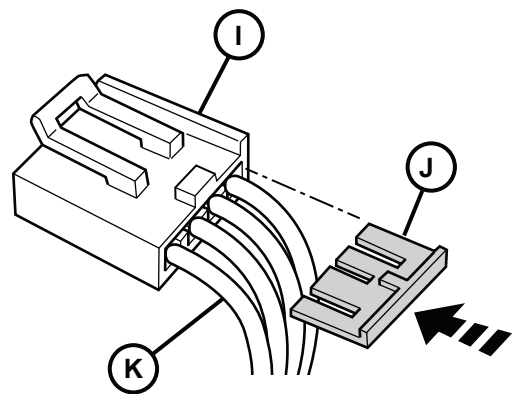
55



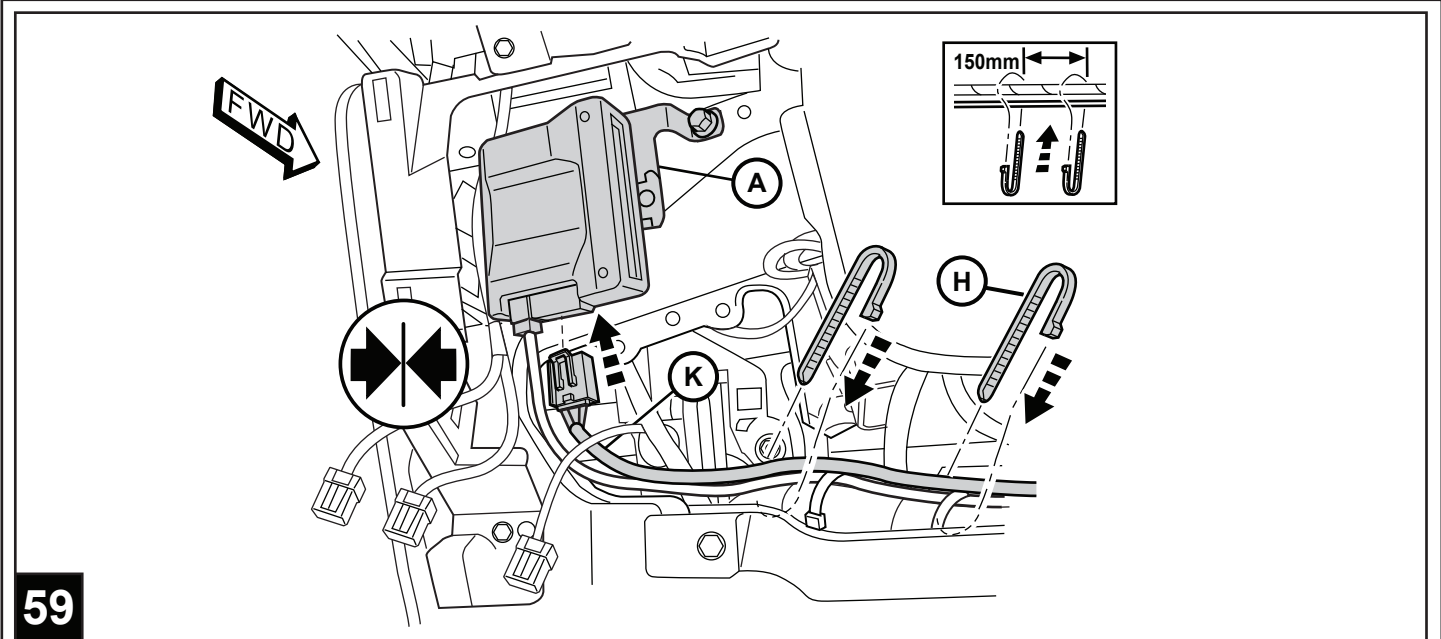
56



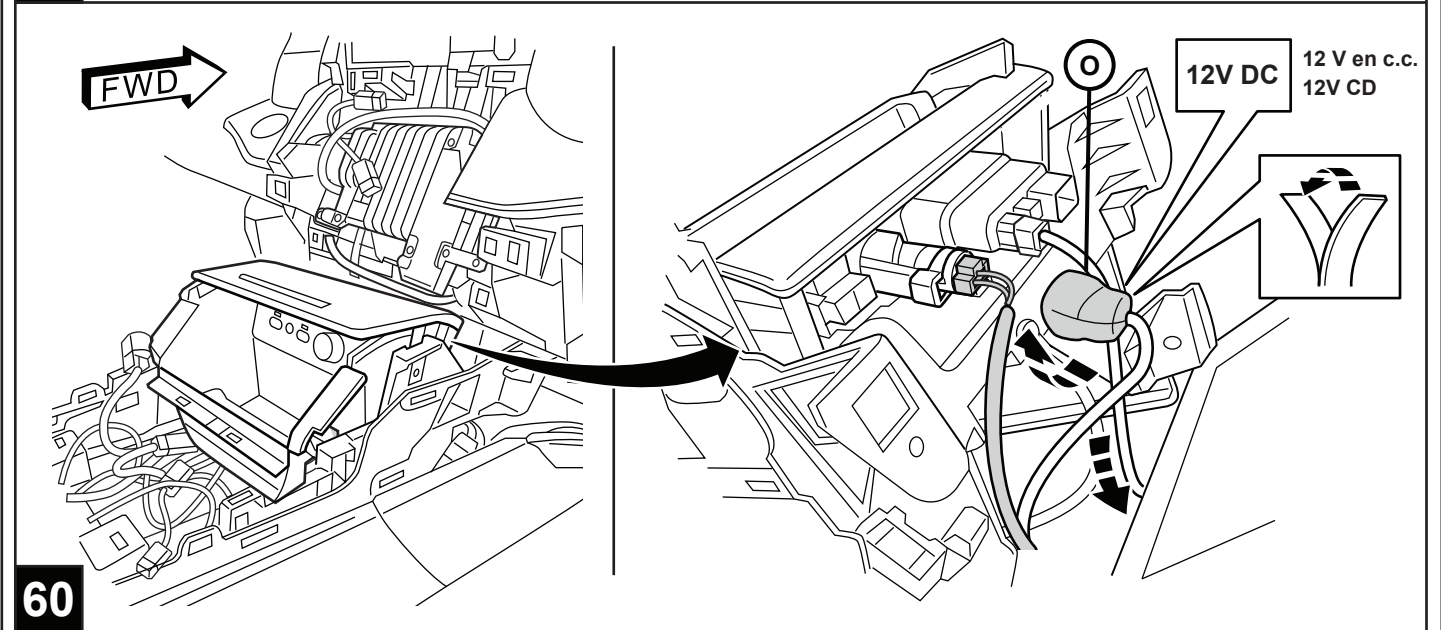
57



58



59



60

REVERSE STEPS 2 THROUGH 15, 24 AND 32 TO REINSTALL ALL VEHICLE COMPONENTS

POUR RÉINSTALLER TOUS LES COMPOSANTS DU VÉHICULE, INVERSEZ LES ÉTAPES DE 2 À 15 ET 24 ET 32

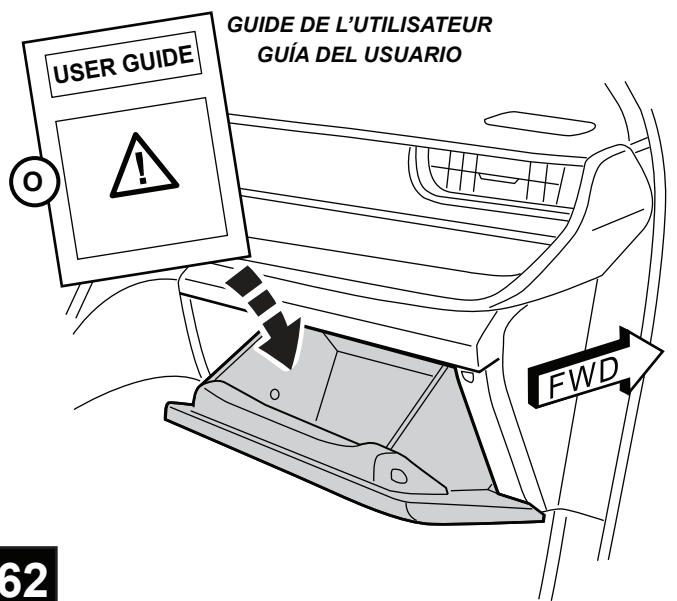
INVIERTA LOS PASOS DEL 2 AL 15, 24 Y 32 PARA VOLVER A INSTALAR TODOS LOS COMPONENTES DEL VEHÍCULO

IF VEHICLE IS NOT EQUIPPED WITH FACTORY TRAILER TOW: REVERSE STEPS 38 THROUGH 40 TO REINSTALL ALL VEHICLE COMPONENTS

SI LE VÉHICULE N'EST PAS MUNI DE L'OPTION DE REMORQUAGE D'ORIGINE : POUR RÉINSTALLER TOUS LES COMPOSANTS DU VÉHICULE, INVERSEZ LES ÉTAPES DE 38 À 40

SI EL VEHÍCULO ESTÁ EQUIPADO CON REMOLQUE DE FÁBRICA: INVIERTA LOS PASOS DEL 38 AL 40 PARA VOLVER A INSTALAR TODOS LOS COMPONENTES DEL VEHÍCULO

61



62